



Church Road, Aldershot

£375,000
Offers in Excess of



Church Road, Aldershot, Hampshire

This beautiful Victorian home, built in 1896, is in immaculate condition and benefits from being refurbished from ground to the roof, whilst still retaining many of its period features. With off road parking, this is a prime location with excellent transport links nearby and within easy walking distance.

FEATURES

- Immaculate condition
- End of terrace attractive period home
- High ceilings & character features
- Beautiful real wooden floors upstairs & down
- Insulated and boarded loft, with storage areas
- Station (direct train to Waterloo) 0.9 miles
- Post office & convenience store 390 feet
- Infant/junior school, doctor's surgery, park, Lido swimming pool, local gym, tennis courts (foc) & gymnastics academy approx. 0.4 miles

ACCOMMODATION

- Entrance hall
- Double aspect living and dining room
- Fitted Kitchen
- Utility
- Cloakroom
- 2 double bedrooms
- Tiled bathroom

OUTSIDE

- Front garden
- Private back garden approx. 100 feet long
- Deck seating area and wooden shed
- Off road parking for 2 cars that can be extended further into the garden via gates

EPC RATING

D

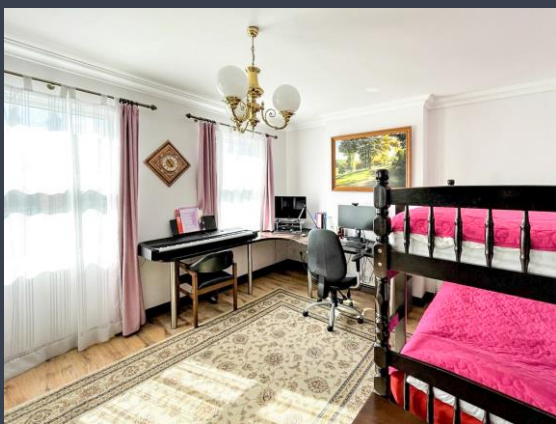






Disclaimer: We wish to inform prospective purchasers that we have prepared these sales particulars as a general guide. We have not carried out a detailed survey, nor tested the services, appliances and specific fittings. Room sizes are approximate and rounded: they are taken between internal wall surfaces and therefore include cupboards / shelves, etc. Accordingly, they should not be relied upon for carpeting, curtains / blinds and kitchen equipment, whether fitted or not, are deemed removable by the vendor unless specifically itemized within these.

Postcode for sat nav: **GU11 3PR**



The Old Dairy, 7 Updown Hill, Windlesham, Surrey GU20 6AF
enquiries@newtonrowe.co.uk | 01276 986900